

Category A - UPHOLSTERY

Fabrics

Specifications

Origin: China

Fabric Composition: 100% Polyester

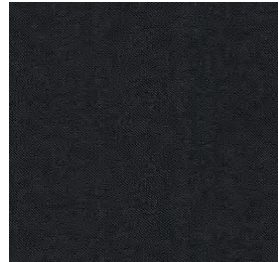
PU Composition: 100% Polyurethane finish

Roll Width: 1330mm



*Exact colours cannot be guaranteed due to how this page is viewed on screen or printed

Chair Fabrics



Black Fabric

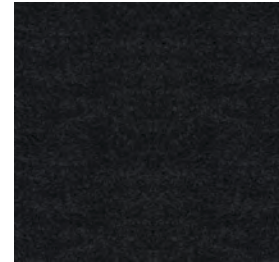


Charcoal Ash Fabric

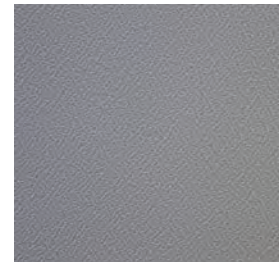


Light Blue Fabric

Screen Fabrics



Black

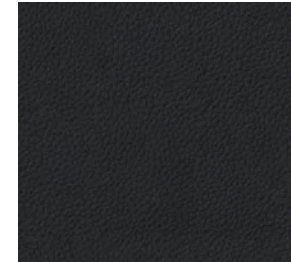


Grey



Blue

Chair PU



Black PU



Tan PU

Category B - FABRIC UPHOLSTERY

Surface Fabrics Specifications

Origin: Australia

Weave: Jacquard

Composition: 100% Polyester

Weight: 335gsm

Pattern Repeat: NA, all over plain

Roll Width: 186cm

Performance

*Exact colours cannot be guaranteed due to how this page is viewed on screen or printed



MIST



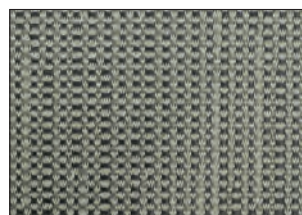
PUMICE



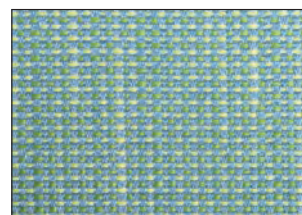
ESSENCE



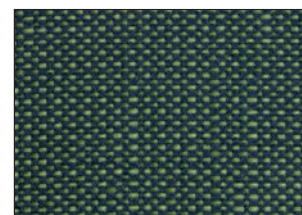
SEAFOAM



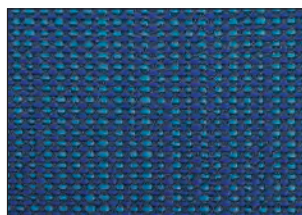
PEBBLE



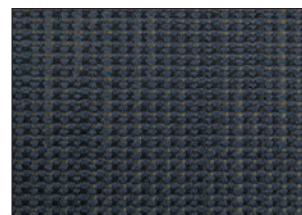
SPRAY



CASCADE



INK



MARINE



NAVY



STEEL



CARBON



ONYX

Category B - FABRIC UPHOLSTERY

Rim Fabrics

Specifications

Width: 188cm

Weight: 280gsm

Gauge: 0.60mm

Fabric Type: 100% Polyester

Construction: Traditional Loom Woven

Fabrication Technique: • Sewing

- Gluing
- Cutter / Plotter

Flame Retardancy: AS 1530.3

Certification: Oeko-Tex Standard 100

Test Standard: Martindale Abrasion AS2001.2

Sustainability: • PVC free

- No Persistent Organic Pollutants

*Exact colours cannot be guaranteed due to how this page is viewed on screen or printed



AMBER



BASALT



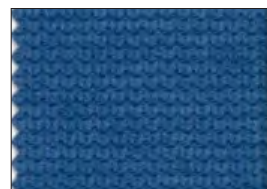
BERRY



BLUESTONE



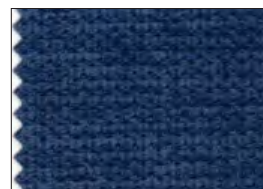
PRUSSIAN



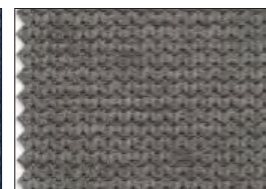
CERULEAN



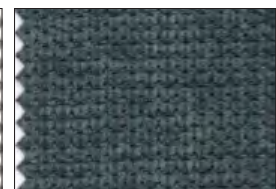
DEEP OCEAN



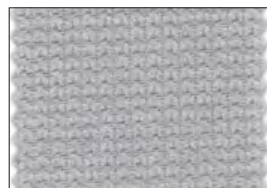
DENIM



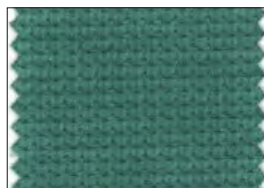
GUNMETAL



SPRUCE



ICE



JADE



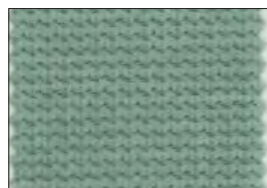
KAFFIR LIME



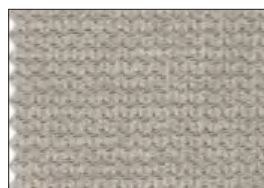
PEACOCK



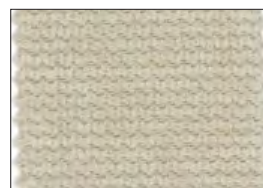
SKY



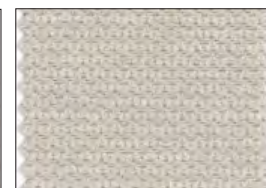
SEA GREEN



STORMY



STRAW



SLEET



TAR

Category B - FABRIC UPHOLSTERY

Laine Fabrics

Specifications

Width: 188cm

Weight: 275gsm

Fabric Type: 100% Polyester

Pattern Repeat: Nil

CTA Rating: • General Commercial Upholstery

• Commercial Screen Fabric

Martindale: 37,600 Abrasions

Flammability: AS1530.3, AS3837

*Exact colours cannot be guaranteed due to how this page is viewed on screen or printed



Category C - FABRIC UPHOLSTERY

Instyle Fabrics

Specifications

Origin: Made in Australia

Composition: 100% polyester

Width / Weight: 137cm / 305gsm

Pattern Repeat: nil

Care Code: CTA 1

Abrasion: Martindale AS2001.2.25 117,000 **CTA**

Rating: HC -Heavy Duty Commercial Use

Pilling: Martindale IWS196 5

Light Fastness: AS 2001.4.21 >6

Fire Ratings: • AS/NZS 1530.3

• AS/NZS 3837 (AS 5367.1)

• ISO 5660.1

Sustainability: • Manufacturer recycles waste

- Manufacturer with reduced energy use
- Free of PFCs & flame retardants
- Free of phthalates & urea formaldehyde

*Exact colours cannot be guaranteed due to how this page is viewed on screen or printed



Category C - FABRIC UPHOLSTERY

Sustainable Fabrics Specifications

Origin: Designed and Made in Australia

Width: 137cm

Weight: 304gsm

Fabric Type: 100% Eco-Polyester

Abrasion: Martindale 55,500 AS2001.2.25.2 Class 5 Commercial Heavy Duty Upholstery Fabric

Fire Tested: • AS/NZS 1530.3; AS/NZS 3837 -1998 (GROUP 2); IMO: A.652 (16) 8.2 & 8.3

Environmental Certificate: GECA TYPE 1 ECOLABEL Textiles & Leather (TLV3.0i-2014)

Carbon Neutral: Certified through Climate Active

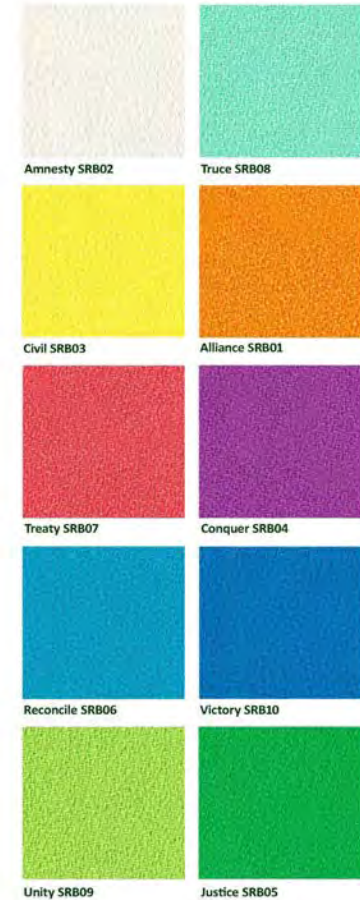
Renegade Originals



Renegade Harvest



Renegade Brights



*Exact colours cannot be guaranteed due to how this page is viewed on screen or printed

Category C - FABRIC UPHOLSTERY

Warwick Fabrics

Specifications

Width: 144cm

Weight: 295gsm

Fabric Type: 60% Polyester, 40% Recycled Polyester*

*Woven using no less than 40% recycled polyester, from both post-consumer and post-industrial recycled yarn sources.

Abrasion: 70,000

Martindale Test: ISO 12947-2 Heavy Duty Commercial

Fire Hazard Properties: AS 1530 Part III Conducted **FR**

Rated: Tested to comply with AS1530.3.

Oeko-Tex: Tested for harmful substances and found to comply with all required criteria for environmentally friendly production facilities.

Halo Easy Clean: High-performance, easy clean fabrics that pass the toughest testing. All Warwick Halo fabrics are woven to precise specifications and tested to exacting standards for colourfastness, abrasion, inherent stain resistance and safety.

Strength and Durability: Tested for heavy commercial upholstery applications and extended performance and appearance characteristics.

*Exact colours cannot be guaranteed due to how this page is viewed on screen or printed



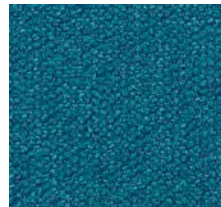
Scarlet



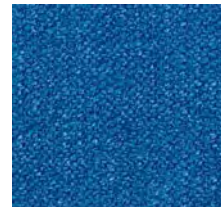
Red



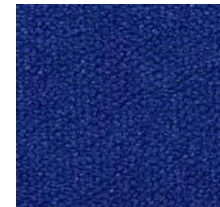
Pink



Teal



Pacific



Ocean



Navy



Purple



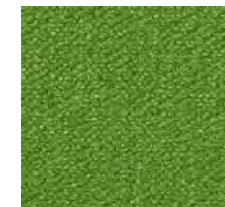
Lemon



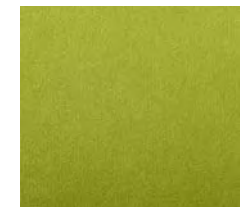
Canary



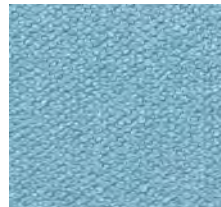
Orange



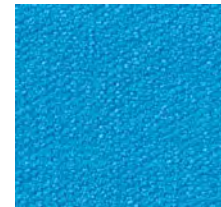
Kiwi



Grass



Turquoise



Silver



Gunmetal



Onyx

Category C - FABRIC UPHOLSTERY

Warwick Fabrics Specifications

Width: 140cm

Weight: 598gsm

Fabric Type: 100% Polyester

Abrasion: 150,000

Martindale Test: ISO 12947-2 Heavy Duty Commercial

Fire Hazard Properties: AS 1530 Part III Conducted **Fire Rated:** Tested to comply with AS1530.2 and 1530.3.

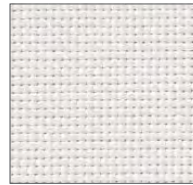
Oeko-Tex: Tested for harmful substances and found to comply with all required criteria for environmentally friendly production facilities.

Halo Easy Clean: High-performance, easy clean fabrics that pass the toughest testing. All Warwick Halo fabrics are woven to precise specifications and tested to exacting standards for colourfastness, abrasion, inherent stain resistance and safety.

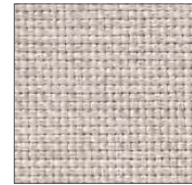
Strength and Durability: Tested for heavy commercial upholstery applications and extended performance and appearance characteristics.



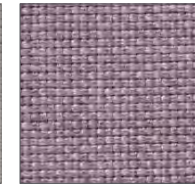
Ice



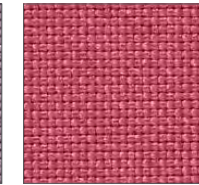
Alabaster



Nougat



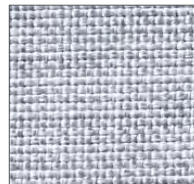
Mauve



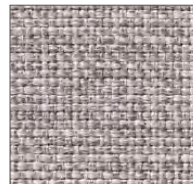
Fuchsia



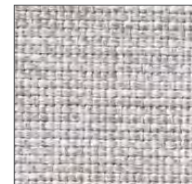
Flame



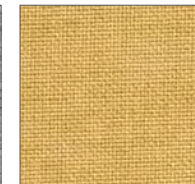
Mist



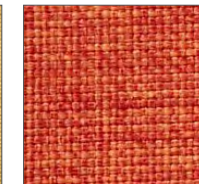
Taupe



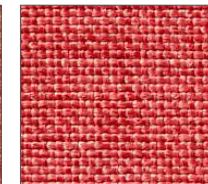
Oatmeal



Tumeric



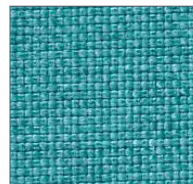
Papaya



Scarlet



Aqua



Lagoon



Pacific



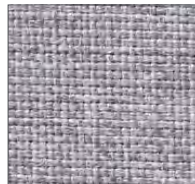
Kiwi



Lime



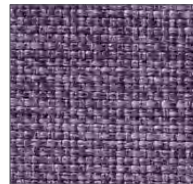
Driftwood



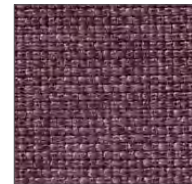
Ash



Marine



Amethyst



Aubergine



Fudge



Sable



Graphite

*Exact colours cannot be guaranteed due to how this page is viewed on screen or printed

Category C - FABRIC UPHOLSTERY

Warwick Fabrics Specifications

Width: 137cm

Weight: 621gsm

Fabric Type: 79% PVC, 21% Polyester

Abrasion: 150,000

Martindale Test: ISO 12947-2 Heavy Duty
Commercial Rating

Fire Hazard Properties: AS 1530 Part III Conducted

FR Protection: Tested to comply with AS1530.3 **Easy**

Clean: High-performance, easy clean fabrics that pass the toughest testing. All Warwick fabrics are woven to precise specifications and tested to exacting standards for colourfastness, abrasion, inherent stain resistance and safety.

Strength and Durability: Tested for heavy commercial upholstery applications and extended performance and appearance characteristics.

HealthGuard Antibacterial, Antimicrobial: Efficacy shown to inhibit a wide range of micro-organisms including bacteria, moulds, yeasts, algae and dust mites. Most significant of which is its effectiveness against Staphylococcus aureus A129.

*Exact colours cannot be guaranteed due to how this page is viewed on screen or printed



Category C - FABRIC UPHOLSTERY

Wortley Fabrics Specifications

Width: 142cm

Weight: 290gsm Approx.

Fabric Type: 100% Polyester

Pattern Repeat: None

Martindale Abrasion: • AS 2001:2.25 - 1990.

Lightfastness: • AS 2001:4.21

- 175,000 rubs

- Rating of 6

Pilling Resistance: • ASTM D3512-2010

- Rating of 5

Seam Slippage: • AS 2001.2.22-2006

- Warp: 3.0mm (Max 6)

- Weft: 3.0mm (Max 6)

Fire Rating: • AS/NZS 1530.3

- Ignitability Index: 9

- Spread of Flame Index: 0

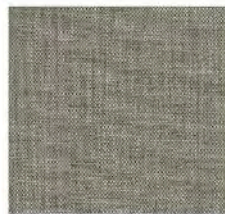
- Heat Evolved Index: 1

- Smoke Developed Index : 4

*Exact colours cannot be guaranteed due to how this page is viewed on screen or printed



Sapphire



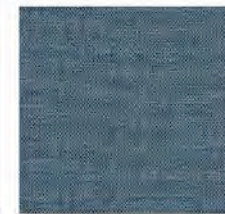
Birch



Carbon



Citrus



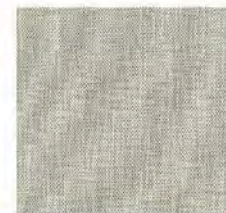
Denim



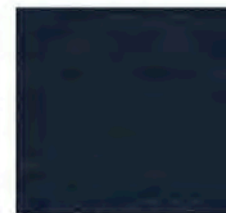
Fire



Meadow



Natural



Navy



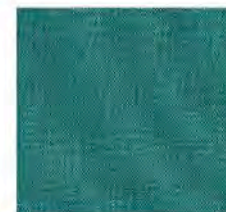
Pillar Box



Purple



Tangerine



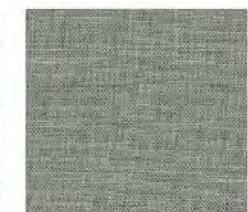
Teal



Tweed



Falcon



Linen